

SURREAL PROJECT

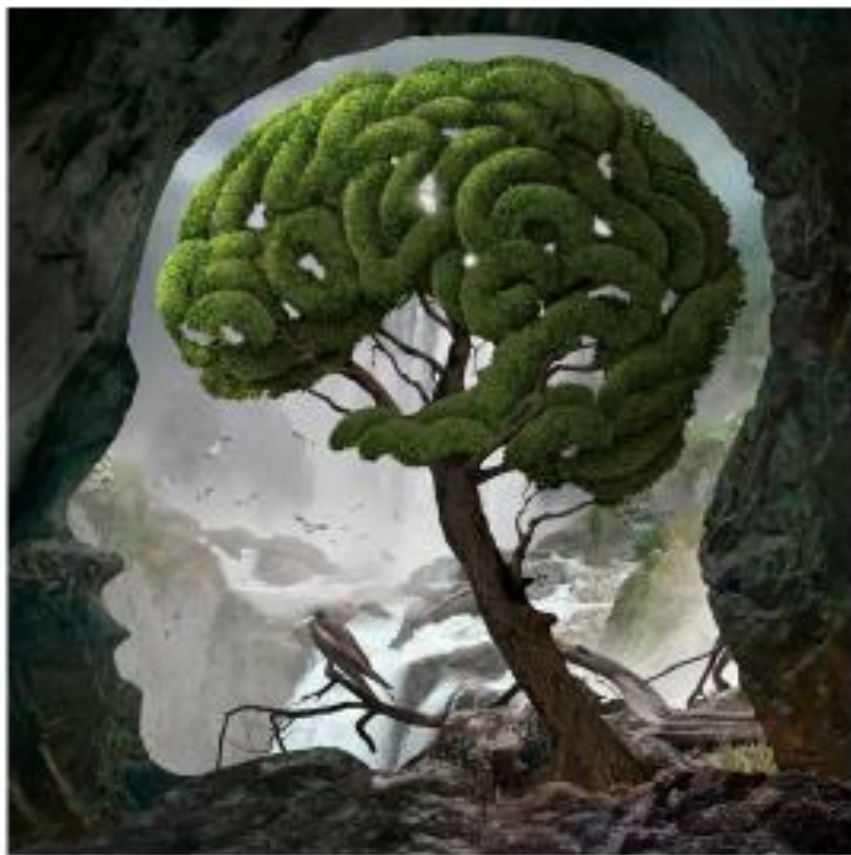
This project in the past was similar, but in the end you had to build a sculpture that was inspired by your Image, Narrative, and research.

We are going to approach it a little differently!





Igor Morski



Zoe V.

Negative space, nature, man vs. nature or the blending/interactions of humans and nature, outline/silhouette, animals, texture





Kaitlyn Markwell





I want you to create a FUNCTIONAL piece inspired by your chosen SURREAL ARTWORK!

- You chose an image...
 - You've broken the image down to some of its simplest elements and principles as well as it's underlying concepts...
 - You've wrote a narrative...
-
- NOW.... I want you to come up with what you'd like to make inspired by this image & research

FORMS TO CHOOSE FROM...

(Or pitch me your idea)

- Greek Vases/Amphoras
- Water Pitcher
- Lidded Vessel/Container
- Platter
- Chalice (set)
- Butter Dish
- Flower Brick
- Cup Set with Tray
- Bowl with Handles
- Candle Holder
- Teapot (I would avoid this, you will create on in ceramics 3)

Here's some examples of Forms...



Steal one of these iconic Greek forms and figure out a way to add sculptural design elements, textures, etc to make it a piece inspired by your image....

Greek pottery types and designs





Or Flower Bricks!





Water pitcher





CUP SET/Chalice/Goblets





Pitcher, Cups, and Tray Set (aggressive)

Platter/Tray

(These would need some major sculptural elements added or it's too simple)





Butter Dish







Basket





Pitcher & cups
PLUS holder



You can definitely go more sculptural and need to consider sculptural elements UNLESS you've got some painting skills. LEFT is a candle holder. RIGHT is a Lidded Vessel.



MY ADVICE:

- Look at your underlying ideas/concepts of your piece
- Look at your narrative, what you underlined, and all the research you've done
- NOW... what images do you need to look for? Look up those underlying concepts and see what you find....
- You have your original Surreal image you chose, but you need to go find MORE new inspirational images from your research...
- THEN.... Choose a functional form that interests you and start making that "form" your own.
- If you have an idea other than what I've shown run it by me....

DUE NEXT WEDS OR SOONER....

- A well put together plan
- New inspirational images (from your research, PRINT) along with sketches of what you want to make.
- Label as much as possible, List Build Steps
- If you turn it in sooner and I OK it you can BEGIN.... **They're all DUE WEDS 1/25!**
- I'm excited to see what you come up with. In the past this has been a sculpture project so to see it turn functional for me is EXCITING!