



KilnSitter® Parts List

PLEASE CALL FOR PRICING AND PARTS NOT LISTED

Skutt Acquires KilnSitter®

In early 2009, Skutt Ceramic Products, Inc. acquired the KilnSitter® division of the W.P. Dawson Corporation giving Skutt exclusive rights to produce the trademarked KilnSitter® Shutoff device and parts. Skutt will continue to provide replacement parts for all brands of kilns including, but not limited to:

- Skutt
- Amaco
- Paragon
- Cress
- Evenheat
- L & L
- Blue Diamond
- Aim
- Olympic

How to Order Parts

Identify Your KilnSitter Model

There are four main KilnSitter Models. These model numbers are printed on the face of the KilnSitter unit and they are: Model K, Model P, Model LT-3, and Model LT-3K. Skutt Kilns only use the Model K and Model LT3-K units. Older kilns, and some custom kilns did not come with printed face plates. For these models it is best to call Skutt to make sure you identify the correct part.

Model P*
*DISCONTINUED



Model LT-3



Model K*
*DISCONTINUED



Model LT-3K

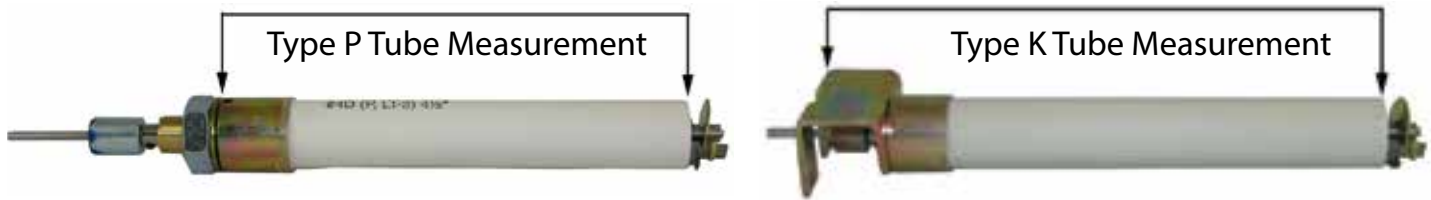


Locate Your Part on the Correct Exploded Diagram

Once you have identified the correct KilnSitter model use the diagram that corresponds to your KilnSitter Model to identify the part you need. The parts in the diagram are numbered and correspond to the KilnSitter Part numbers listed in column one of the price list. If you are ordering shutoff tubes or sensing rods you will need to measure them to identify the correct part.

Measure Your Tube Assembly and Sensing Rod

Most parts are interchangeable from model to model however the style and length of the **Tube Assemblies** and **Sensing Rods** used in KilnSitters can vary depending on the brand of kiln and kiln model. The two styles are pictured below. The “P” Style was used in Model P and Model LT-3 units whereas the “K” style were used in Model K and Model LT-3K units. Once you know the style you will need to measure the tube assembly as shown in the photos. When you go to purchase your part simply choose the tube assembly that is the right size out of your parts list.



Sensing Rods

Dawson Part #	Skutt Part #	Measurement		Tube Type
		By Wall Thickness	Overall Length	
3	KS-3			
3A	KS-3A	2 1/2"	7 1/2"	P
3B	KS-3B	3"	8"	P
3C	KS-3C	4"	9"	P
3D	KS-3D	4 1/2"	9 1/2"	P
3E	KS-3E	5"	10"	P
3F	KS-3F	5 1/2"	10 1/2"	P
3G	KS-3G	6"	11"	P
3H	KS-3H	7"	12"	P
3I	0118D02641	2 1/2"	7"	K (Short)
3J	0419D02641	3"	8"	K (Long)
3K	1001D02641	3"	8.5"	K (X-Long)
3L	KS-3L	3 1/2"	8.75"	p

Tube Assemblies

Dawson Part #	Skutt Part #	Measurement		Tube Type
		By Wall Thickness	As Shown	
4, 70	KS-4, KS-70			
4A	KS-4A	2 1/2"	4"	P
4B	KS-4B	3"	4 1/2"	P
4C	KS-4C	4"	5 1/2"	P
4D	KS-4D	4 1/2"	6 1/8"	P
4E	KS-4E	5"	6 5/8"	P
4F	KS-4F	5 1/2"	7"	P
4G	KS-4G	6"	7 1/2"	P
4H	KS-4H	7"	8 1/2"	P
4L	KS-4L	3 1/2"	5 1/4"	P
70	0114	2 1/2"	6"	K (Short)
70A	0339	3"	7"	K (Long)
70B	0369	3"	7 1/2"	K (X-Long)

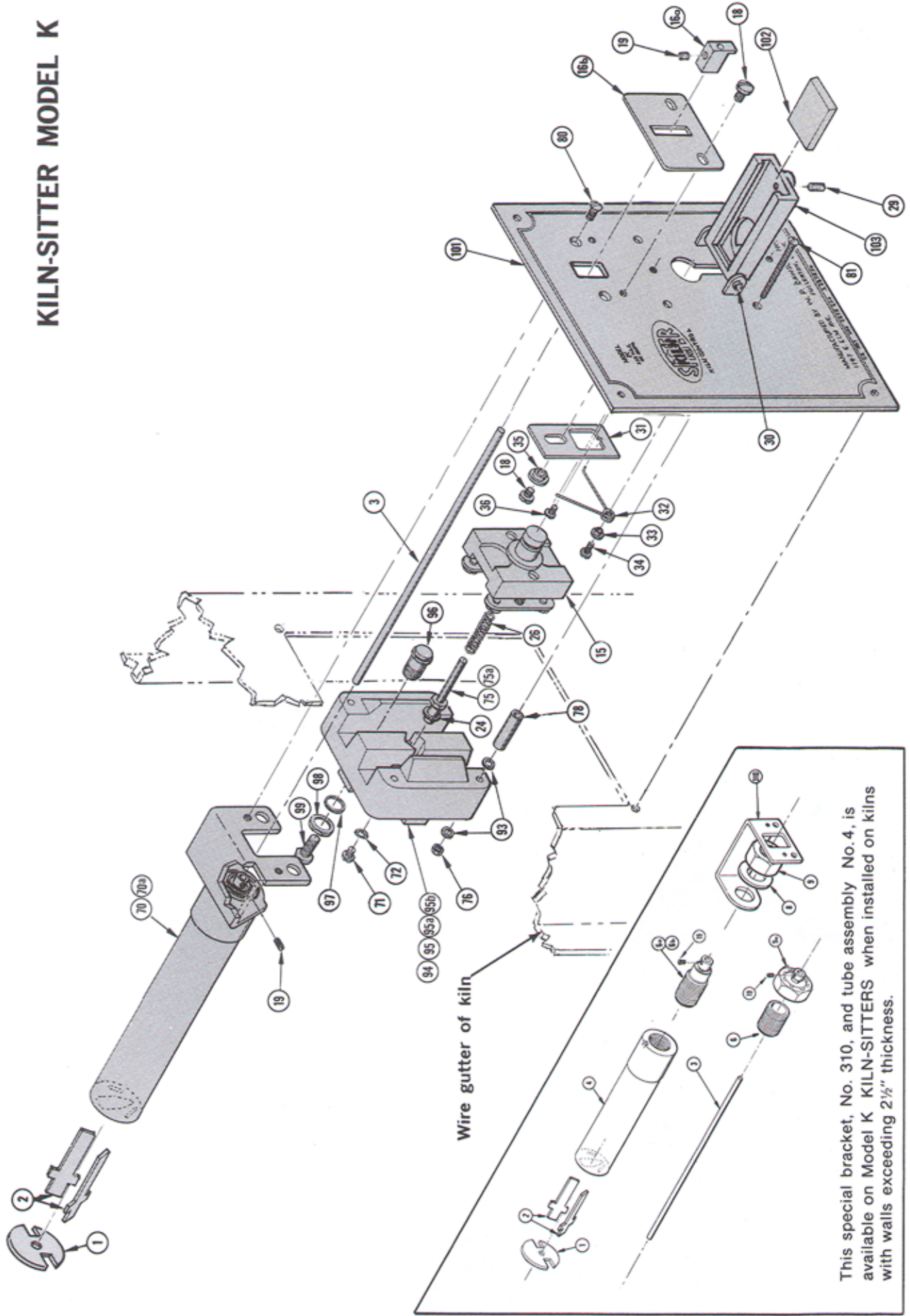
Dawson Part#	Skutt Part#	COMPLETED UNITS W/TUBES
LT-3K	KS-LT-3K	Kiln Sitter w/Timer
LT-3	KS-LT-3	Kiln Sitter w/Timer /Box
K	KS-K	Kiln Sitter
P	KS-P	Kiln Sitter w/Box
LT-3H	KS-LT-3H	Kiln Sitter w/Timer /Box (75A)
LT-3K-H	KS-LT-3K-H	Kiln Sitter w/Timer (75 amp)
LT-3KR	KS-LT-3KR	Kiln Sitter w/ramp
Dawson Part#	Skutt Part#	REPLACEMENT PARTS
M	KS-M	Manual (Specify P-K or LT3- LT3-K)
1	0873D02641	Firing Gauge
2	0113D02641	Cone Supports (Pair)
3	KS-3	See Sensing Rod Table
5	KS-5	Gasket (#4 Tube Gasket)
6	KS-6	Nipple (#4, 5"-7")
6A	KS-6A	Nipple (#4, 3"-4 1/2")
6B	KS-6B	Nipple (#4-2 1/2")
8	KS-8	Washer (metal)
9	KS-9	Nut (#4 Tube)
9A	KS-9A	Nut (#4 w/Swivel)
15	KS-15	Plunger (50 Ampere)
16A	KS-16A	Claw Assembly (with #19)
16B	KS-16B	Guide Plate
18	KS-18	Screw (6-32 X 1/4")
19	KS-19	Set Screw (6-32 X 1/8")
24	KS-24	Washer (Fiber, Center Post)
26	KS-26	Spring (Center Post)
29	KS-29	Set Screw (8-32 X 3/8")
30	KS-30	Pivot Pin (Weight Assembly)
31	KS-31	Lock (P/K Units)
32	KS-32	Spring (P/K Lock)
33	KS-33	Retainer (Spring)
34	KS-34	Screw (4-40 X 1/4")
35	KS-35	Retainer (Cam/Lock Assy)
36	KS-36	Screw (4-40 x 1/8")
37	KS-37	Screw (3/8" X #6)
40	KS-40	Mounting Box (LT-3/P)
42	KS-42	Baffle, Mounting Box
43	KS-43	Spring Ring (#5 Washer)
44	KS-44	Counter Weight (#4-4"/#70B)

Dawson Part#	Skutt Part#	REPALACEMENT PARTS
45	KS-45	Counter Weight (#4-5")
46	KS-46	Counter Weight (#4-4 1/2", 5 1/2")
47	KS-47	Counter Weight (#4-6")
48	KS-48	Counter Weight (#4-7")
49	KS-49	Claw w/set screw-black
58	KS-58	Cam (LT-Units)
59	KS-59	Spring (LT-Cam)
62	KS-62	Set Screw (#64 - Knob)
64A	KS-64	Knob (LT w/set screw)
67	KS-67	Motor (220-60hz)
67A	KS-67A	Motor (120-60hz)
67B	KS-67B	Motor (220-50hz)
67C	KS-67C	Motor (120-50hz)
68	KS-68	Spring Grip (Counter Weight)
69	KS-69	Set Screw (#49 Claw)
70,70A,70B		See Tube Assembly Table
71	KS-71	Screw (Center Post/Motor)
72	KS-72	Lock Washer (Center Post)
75	KS-75	Center Post
75A	KS-75A	Center Post Assembly
76	KS-76	Nut (Switch Mounting)
78	KS-78	Switch Stand-Off
80	KS-80	Screw (Flat Head/#70-#70B)
81	KS-81	Screw (Switch Mounting)
81A	KS-81A	Screw Assy. (Switch Mount)
83	KS-83	S-Locking Cam (Solenoid)
85	KS-85	Motor Shim
91	KS-91	Face Plate (LT-3/220-60HZ)
		Includes: #29, 30, 102, 103
91A	KS-91A	Face Plate (LT-3/120-60HZ)
		Includes: #29, 30, 102, 103
91B	KS-91B	Face Plate (LT-3/220-50HZ)
		Includes: #29, 30, 102, 103
92	KS-92	Face Plate (LT-3K/220-60HZ)
		Includes: #29, 30, 102, 103
92A	KS-92A	Face Plate (LT-3K/120-60HZ)
		Includes: #29, 30, 102, 103
92B	KS-92B	Face Plate (LT-3K/220-50HZ)
		includes: #29, 30, 102, 103
93	KS-93	Washer (Nylon Switch Mtn)

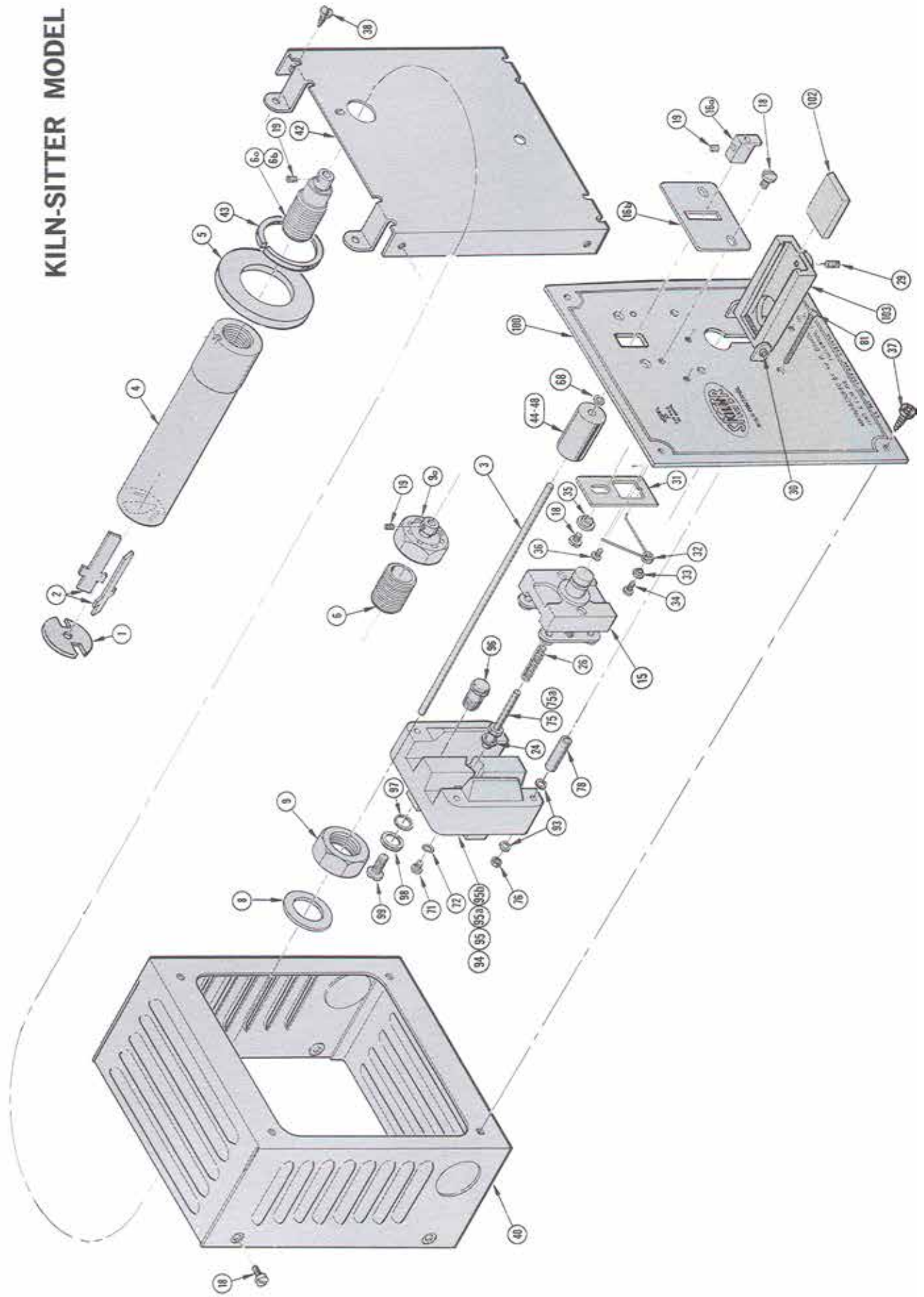
Dawson Part#	Skutt Part#	REPLACEMENT PARTS
94	KS-94	Switch Block (W/O Misc.)
95	KS-95	Switch Block (W/#96-#98)
95A	KS-95A	Switch Block (W/#75A, #96-98)
95B	KS-95B	Switch Block (W/#99, 95A, 15)
96	KS-96	Contact (Switch)
96A	KS-96A	Contact Assy. (W/#96-99)
97	KS-97	Contact Washer (Nylon)
98	KS-98	Contact Nut
99	KS-99	Screw (10-32 X 3/8")
99A	KS-99A	Screw (10-32 X 1/2")
100	KS-100	Face Plate (Model "P")
		includes: #29, 30, 102, 103
		Face Plate (Model "K") Discontinued
		includes: #29, 30, 102, 103
102	KS-102	Trigger (Weight-1/16" Thick)
103	KS-103	Weight
103A	KS-103A	Weight Assy. (#29, 102, 103)
115	KS-115	Rivet (Solenoid)
116	KS-116	Solenoid (220-50HZ)
117	KS-117	Screw (Solenoid Mount)
119	KS-119	Face Plate (LT-3K-S/220-50HZ)
		Includes: #29, 30, 102, 103
120	KS-120	Face Plate (LT-3-S/220-50HZ)
		Includes: #29, 30, 102, 103
130	KS-130	Conversion Plate (K to LT-3K)
131	KS-131	Conversion Plate (P to LT-3)
310	KS-310	Bracket (Adapts P Tube to K)
116W	KS-116W	Hex Wrench (1/16"-Claw, Swivel)
564W	KS-564W	Hex Wrench (5/64"-Trigger)
		75 Ampere Replacement Parts
15H	KS-15H	Plunger (75 Amp)
67H	KS-67H	Motor (220-60HZ / 1/4" Lugs)
78H	KS-78H	Switch Stand-Off (75 Amp)
81HA	KS-81HA	Screw Assy. (Switch Mount)
91H	KS-91H	Face Plate (LT-3-H/220-60HZ)
		Includes: #29, 30, 102, 103
92H	KS-92H	Face Plate (LT-3K-H/220-60HZ)
		Includes: #29, 30, 102, 103
94H	KS-94H	Switch Block (W/O Misc.)
95H	KS-95H	Switch Block (W/#96-98)

95HA	KS-95HA	Switch Block (W/#75A, #96-98)
95HB	KS-95HB	Switch Block (W/#99A, 95HA, 15H)
96H	KS-96H	Contact (75 Amp)
96HA	KS-96HA	Contact Assy. (W/#96H-99H)
97H	KS-97H	Contact Washer (Nylon)
98H	KS-98H	Contact Nut (75 Amp)
99H	KS-99H	Screw (Contact)
*		Subject to Silver Surcharge

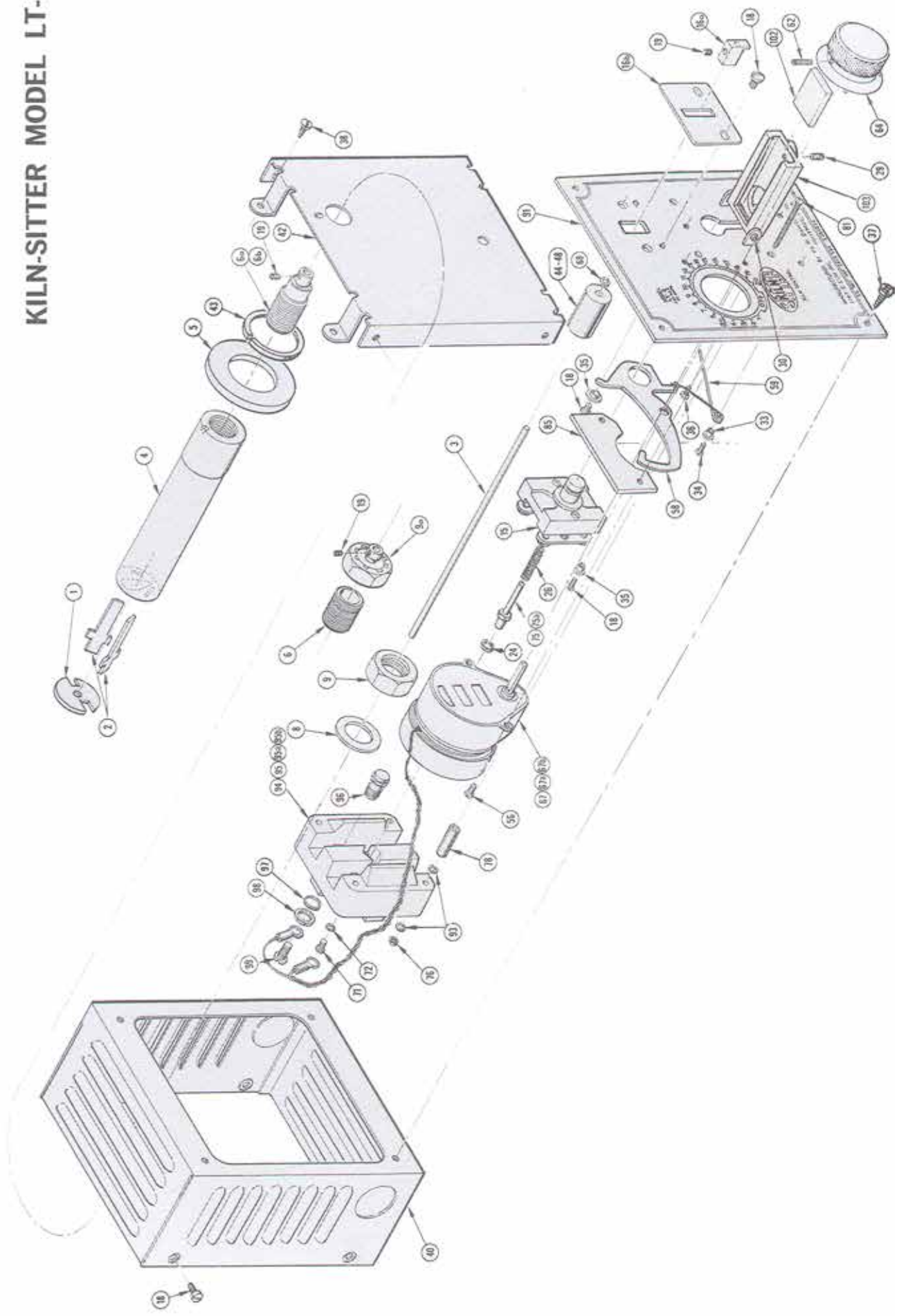
KILN-SITTER MODEL K



KILN-SITTER MODEL P



KILN-SITTER MODEL LT-3



KILN-SITTER MODEL LT-3K

