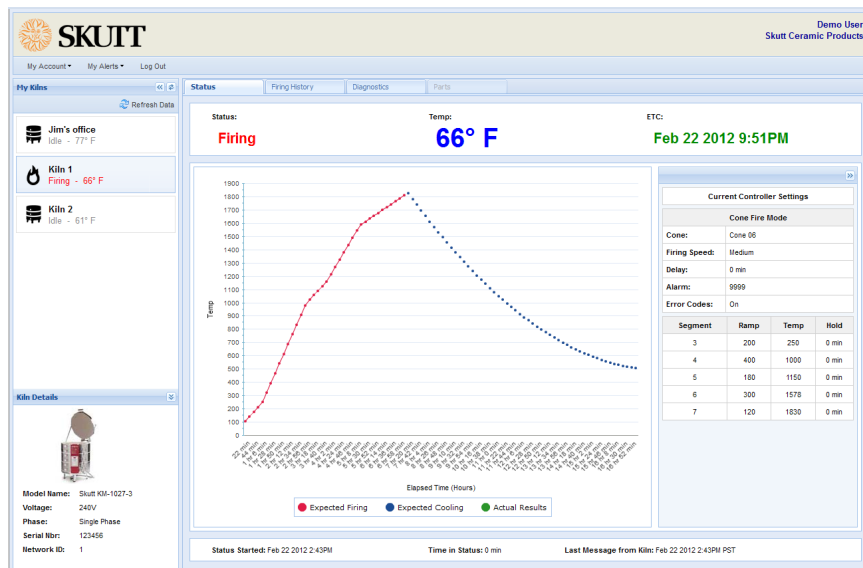




SKUTT

KilnLink

Installation Manual



6441 SE JOHNSON CREEK BLVD. PORTLAND, OR 97206 (503) 774-6000 SKUTT@SKUTT.COM

WWW.SKUTT.COM

Rev. 9/26/18

Welcome to KilnLink!

This manual will cover specifications and installation instructions for standard KilnMaster Kilns (KM and GM Models), and our newly equipped Touchscreen Kilns (KMT and GMT Models).

For kilns equipped with a KMT or GMT Touchscreen, skip to page 9 for setup instructions.

KilnMaster Specifications (KM & GM Models)

Provided by Skutt with purchase of a Skutt KilnMaster kiln with LinkBoard and KilnLink:

- 1 KilnLink Box for every 4 kilns.
- 1 KilnLink Power Supply 110-120V, 50-60HZ, 0.15A
- 1 LinkBoard per Kiln (installed at factory when ordered with new kiln or Easy View with LinkBoard)
- Current Sensor (standard on newer KM kiln models)
- 1 Phone Jack with 3-way splitter (for use with multiple kiln installation)
- 2 - 14 ft. RJ11 Cable (Straight through*) - Kiln to KilnLink Box connection
- Current firmware in controller. Guaranteed with purchase of kiln manufactured after 7/19/2012.

** This looks like a standard phone cord, but it is different. Use only cords supplied by Skutt.*



Required by Customer for Installation:

- Internet Connection (always on)
- 1 Ethernet Network Cable (sufficient length to connect KilnLink Box to internet.
- 120V Power Outlet within 6 ft of KilnLink Box location.
- KilnMaster Kiln controller with current firmware. Guaranteed with purchase of kiln manufactured after 7/19/2012. (Controller must be replaced or upgraded if manufactured prior to this date.)

Required by Customer for Operation - One or more of the following:

- KilnLink Data Plan (1 Yr or 5 Yr)
- 1 Computer with Internet connection. Mac, PC or Unix/Linux.
- Cell phone plan with text (SMS) plan. (If text alerts are to be utilized. Unlimited text plan recommended.)
- 1 Smart Phone. IOS, Android, or Blackberry (tested) if mobile web app is to be used.

KilnMaster Installation Instructions (KM & GM Models)

We recommend setting up your KilnLink system using the provided phone jack with 3-way splitter (as shown in Multiple Kiln Installation diagram on page 7), even if you are installing a system for just one kiln. This way, most of the components are in place if you want to connect more kilns.

1. Locate the KilnLink Box at a convenient location that will remain dry on a wall near the kiln so that either; a 14 ft. cable will reach between the KilnLink Box and the control box on the kiln, or so that the KilnLink Box is within a 14 ft. cable reach of a 3-way splitter and the 3-way splitter is within a 14 ft. cable reach of the control box on the kiln. The KilnLink Box will also need to be within 320 ft. of an Internet connection and within 6 ft. of a 120 volt power outlet. Be sure the intended routing of any cables or power cords will prevent them from lying against the (hot) sides or lid of the kiln(s). Mount the KilnLink Box to the wall using mounting screws or anchors appropriate for the type of wall material.
2. Plug one end of an Ethernet Network Cable (not provided) of appropriate length (with RJ45 connectors) into an Internet connection and plug the other end of the cable into the KilnLink Box.
3. Mount the phone jack with 3-way splitter to the wall using the double stick tape pad or screws (located inside the jack cover) so that it is within a 14 ft. cable reach of the control box on the kiln. Note: For multiple kiln connections, each phone jack with 3-way splitter will need to be within a 14 ft. cable reach of the next phone jack with 3-way splitter.
4. Plug one end of a 14 ft. RJ11 cable (included with the LinkBoard kit) into the KilnLink Box and plug the other end into the far left position of the 3-way splitter.
5. Using the second 14 ft. RJ11 cable (included with the LinkBoard kit), plug one end into the center position of the 3-way splitter and plug the other end into the LinkBoard receptacle on the kiln control box. This cable can be tied to the kiln's power cord with zip ties if desired.
6. If connecting multiple kilns, use another 14 ft. RJ11 cable (included with additional kiln LinkBoard kit) and plug one end into the far right position of the previous kiln's 3-way splitter and plug the other end into the far left position of the 3-way splitter being used for additional kiln. See illustration on page 7 for multiple kiln installation.
7. Plug in the KilnLink Power Supply to the building's 120 volt power outlet and plug the other end of the cable from the Power Supply into the KilnLink Box.

Setting the ID

If you are connecting more than one kiln to your KilnLink Box (you can connect up to four), you will need to have a unique ID for each kiln. All new kilns will leave the factory with a Kiln ID set to "1". If you are only installing 1 kiln, you may skip this step. To set the ID for each additional kiln, follow these instructions:

- From Idle press **MENU** until you see "CNFG" and press **ENTER**.
- Press **MENU** until you see "Id" and press **ENTER**.
- The display will flash the kiln ID currently set for the kiln. Change it to "2" by pressing the **2** key and press **ENTER**.
- If there are 3 or 4 kilns, change these Id settings to 3 and 4 respectively.

Testing the Unit

There are red and green indicator lights on both the LinkBoard and KilnLink Box. These are used for troubleshooting to make sure the two units are communicating correctly with each other and the Internet. After 1 minute the light should perform as follows:

KilnLink Box

- Red - Solid with brief flashing once a minute.
- Green - Blink once every 2 seconds with intermittent bursts of rapid blinking when communicating.

LinkBoard

- Red - Solid indicates good connection. No light often indicates you did not use proper cable.
- Green - Off with intermittent bursts of rapid blinking when communicating.

If you have problems connecting, please contact Skutt's Technical Support Department for additional help troubleshooting.

NOTE: Before you can activate your account, you will need to provide your Distributor with this completed form for each KilnLink box you have purchased.

MySkutt Activation Request Form KM & GM Models

Kiln Information

	Kiln 1	Kiln 2	Kiln 3	Kiln 4
Model	_____	_____	_____	_____
Voltage	_____	_____	_____	_____
Phase	_____	_____	_____	_____
Serial Number	_____	_____	_____	_____

KilnLink Box Information

Serial Number (Located on back of the KilnLink Box) _____

Distributor Information

Company Name _____

City _____ State _____ Phone _____

I Purchased My KilnLink Data Plan Directly From Skutt

Location Information

Company/School District _____

Address _____

City _____ State _____ Zip _____

Phone _____

Primary User (Administrator) Information

Name _____

Phone _____

Email _____

Email this form to kilnlink@skutt.com or fax it to (503) 774-7833.

You may also provide it to your distributor to forward on to Skutt.

Activating KilnLink Data Plan

Once Skutt receives your completed MySkutt Activation Request Form and payment, we will create your account. The Data Plan associated with each kiln begins when your account is created.

Once your KilnLink has been installed and all the indicator lights are flashing correctly, it is time to login and activate your account. You should have received a temporary User Name and Password when you received the KilnLink Box. If you did not, you will need to contact your Skutt distributor and give them the following information:

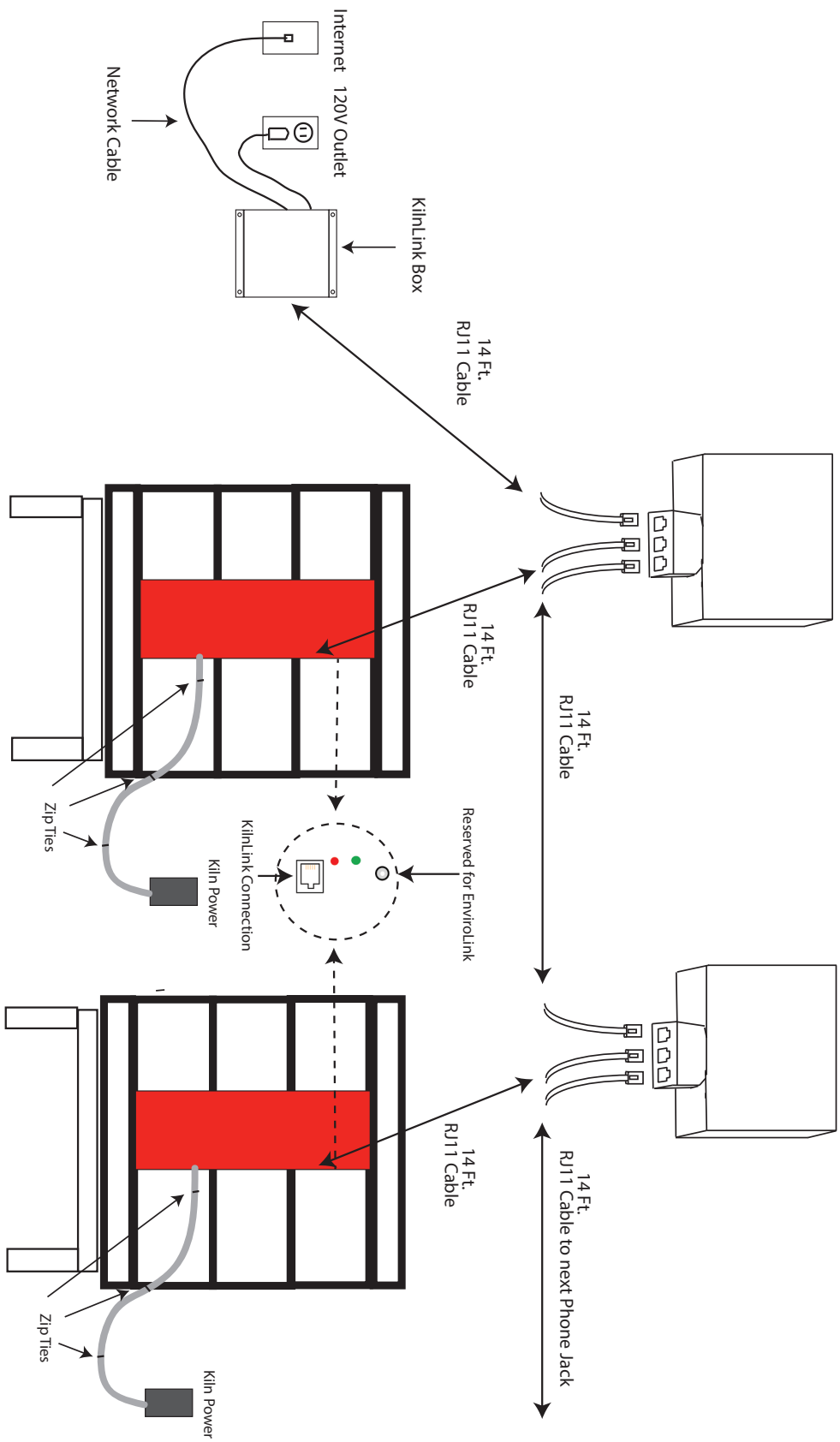
- Serial Number (S/N) (located on the side of your KilnLink Box)
- Name
- Location
- Data Plan (1 Yr or 5 Yr)

They will then contact a KilnLink administrator to assign you a temporary User Name and Password.

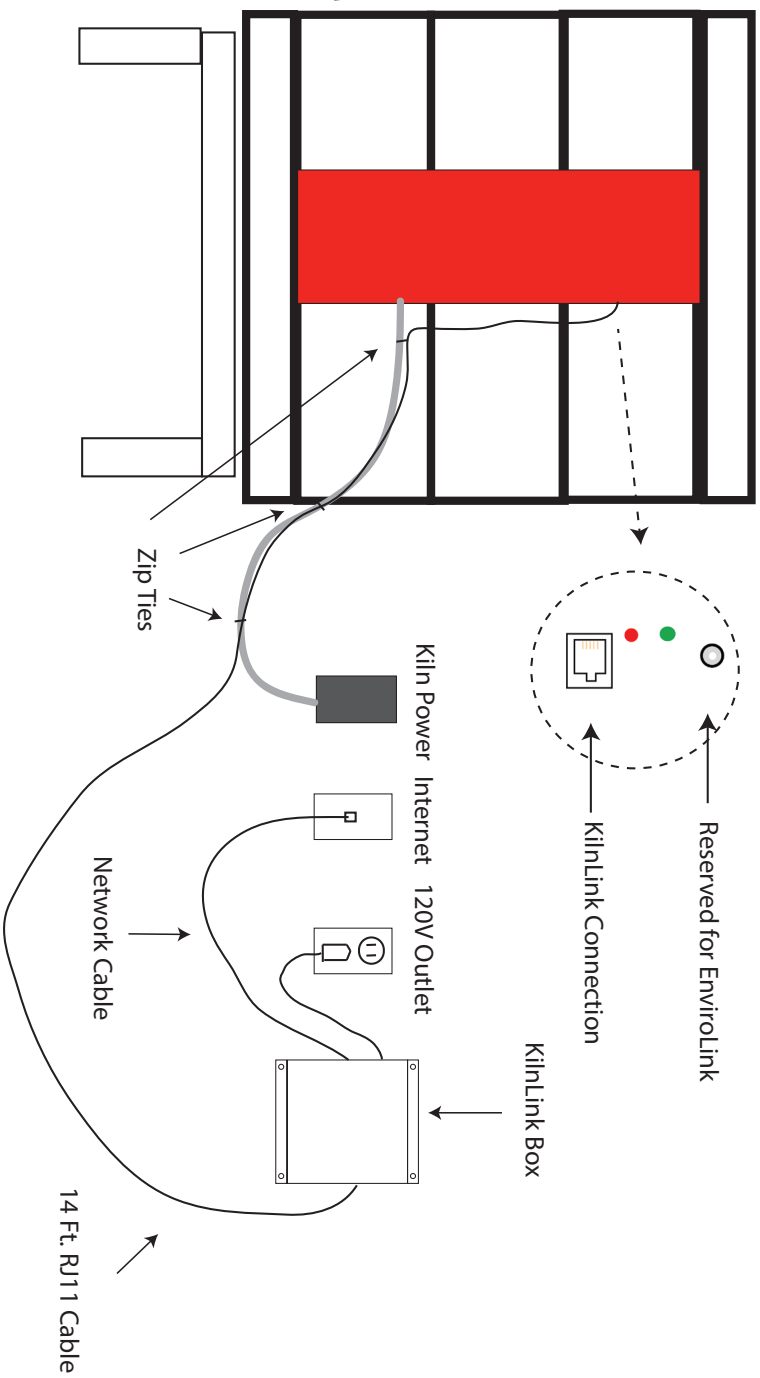
Login Instructions

1. Go to www.myskutt.com
2. Input your temporary User Name and Password. If you are installing an additional unit to an existing KilnLink Box you can login with your current User Name and Password.
3. Click on SUBMIT.

KilnLink - Multiple Kiln Installation

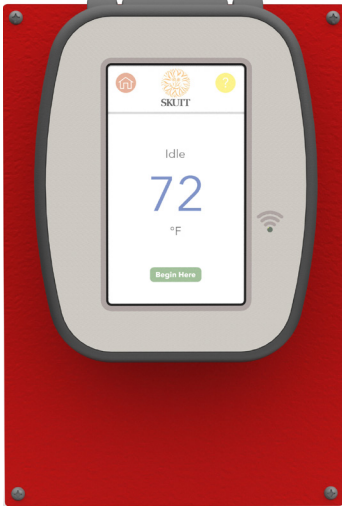


KilnLink - Single Kiln Installation



Touchscreen Specifications (KMT & GMT Models)

Touchscreen Controllers have built-in Wifi, which eliminates the need for additional hardware and wiring, so now all you need to do is pay a minimal data storage and development fee.



Provided by Skutt with purchase of a Skutt Touchscreen Controlled Kiln (KMT/GMT) or Skutt Touchscreen Controller Upgrade Kit:

- 1 Touchscreen Controller (KMT/GMT)

Required by Customer for Installation

- WiFi Connection (always on)
- Current Sensor (standard on newer KM kiln models)

NOTE: Most of the diagnostic features of the new controller depend on the Current Sensor. Not all kilns came equipped with a current sensor. If your old controller did not have a Current Sensor, we HIGHLY recommend installing one: Part # 2648.

Required by Customer for Operation - One or more of the following

- KilnLink Data Plan (1 Yr or 5 Yr)
- 1 Computer with Internet connection. Mac, PC or Unix/Linux.
- Cell phone plan with text (SMS) plan. (If text alerts are to be utilized. Unlimited text plan recommended.)
- 1 Smart Phone. IOS, Android, or Blackberry (tested) if mobile web app is to be used.

Touchscreen Installation Instructions (KMT & GMT Models)

As mentioned, the Touchscreen Controller's built-in WiFi eliminates the need for additional hardware and wiring. In order to use KilnLink, you will need to connect to WiFi available in the room you are firing. This can be accessed from Settings/WiFi or simply by pressing the WiFi icon at the top left hand corner of the Idle Screen. We recommend using a dedicated access point or guest network that is independent from your main network.

Now, turn on the Touchscreen unit to locate the Controller's Serial Number and MAC Address. This information is located in the Controller's Menu.

1. From the Idle screen press **Begin Here**.
2. Select **Diagnostics Menu**.
3. Select **Diagnostic Reports**.
4. Select **Kiln Info**: The menu will display the Controller's Serial Number and MAC address on the same screen.
5. Complete the Touchscreen Controller Information section of the MySkutt Activation Request Form for KMT & GMT Models.

Activating KilnLink Data Plan

Once Skutt receives your completed MySkutt Activation Request Form and payment, we will create your account. The Data Plan associated with each kiln begins when your account is created.

You will receive a temporary User Name and Password with your activation email. If you do not receive this, you will need to contact Skutt or your Distributor and give them the following information:

- Controller Information:
 - Serial Number (BI Serial Number)
 - MAC Address
- Name
- Location
- Data Plan (1 Yr or 5 Yr)

They will then contact a KilnLink administrator to assign you a temporary User Name and Password.

Login Instructions

1. Go to www.myskutt.com
2. Input your temporary User Name and Password.
3. Click on **SUBMIT**.

NOTE: Before you can activate your account, you will need to provide your Distributor with this completed form for each Touchscreen Controller you have purchased.

MySkutt Activation Request Form KMT & GMT Models

Kiln Information

Model _____ Serial Number _____
Voltage _____ CK# _____
Phase _____

Touchscreen Controller Information

BI Serial Number _____
Mac Address _____

(This information is located in the Controller's Menu: From the Idle screen press **Begin Here**. Select **Diagnostics Menu**, then select **Diagnostic Reports**, and then select **Kiln Info**. The menu will display the Controller's Serial Number and MAC address on the same screen.)

Distributor Information

Company Name _____
City _____ State _____ Phone _____
 I Purchased My KilnLink Data Plan Directly From Skutt

Location Information

Company/School District _____
Address _____
City _____ State _____ Zip _____
Phone _____

Primary User (Administrator) Information

Name _____
Phone _____
Email _____

Email this form to kilnlink@skutt.com or fax it to (503) 774-7833.

You may also provide it to your distributor to forward on to Skutt.