



1027/1227 Lid Brace Upgrade

Thank you for purchasing the new lid brace kit for your Skutt 1027 or 1227 kiln. The two models share the same lid brace with two notches for high or low lid openings. The new lid brace also incorporates a safety stud welded to the end of the lid brace to prevent accidentally opening the kiln lid too far.

Your kit should contain the following parts:

- 1 - lid brace arm
- 1 - lid brace bracket
- 1 - lid brace pad
- 3 - washers
- 1 - small hitch pin
- 8 - sheet metal screws

INSTALLATION:

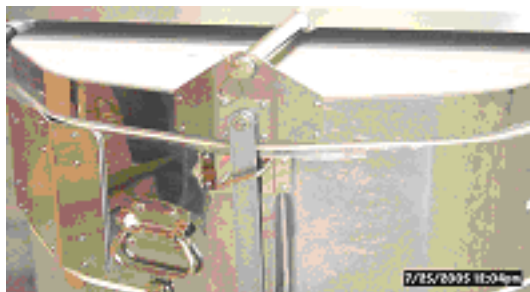
1. Remove the old lid brace and lid brace pads from your kiln. Use a small hammer to VERY gently pound down the metal around the old sheet metal screw holes.

2. Refer to the photos below to position your new lid brace pad and lid brace bracket using the sheet metal screws provided. The sheet metal screws provided are self-tapping and require the use of a motorized drill or screwdriver to set them. If setting the screws by hand it is necessary to use a small nail or ice pick to punch a small pilot hole in the metal band material and then set the screw by hand. Do not punch a hole larger than the body of the sheet metal screw.

NOTE: The photos show the lid brace package installed on the lid lifter bracket. If your kiln is not equipped with the lid lifter package, Use the photo for location of the lid brace directly on the metal band material.

3. Install the lid brace pad on the metal band on the kiln lid. Install the lid brace bracket on the metal band of the top kiln section. The lid brace pad for the 1227 will have a flat mounting plate. The lid brace pad and lid brace bracket for the 1027 will have a bent metal plate to fit around the radius of the kiln lid and section.

1027 Kiln



1227 Kiln

